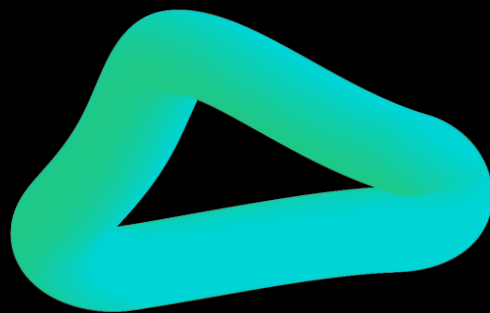


*the* **NODE**

**NTG**  
NEW  
TOWN GROUP.



**TURNING HEADS**

# TABLE OF CONTENT

01 —

ABOUT NTG

02 —

OUR PROJECT

03 —

LOCATION

04 —

UNIT TYPES

05 —

FUNCTIONALITY

06 —

OUR PARTNERS

**ABOUT  
NTG**

**01**

---

# NTG

NEW  
TOWN GROUP.

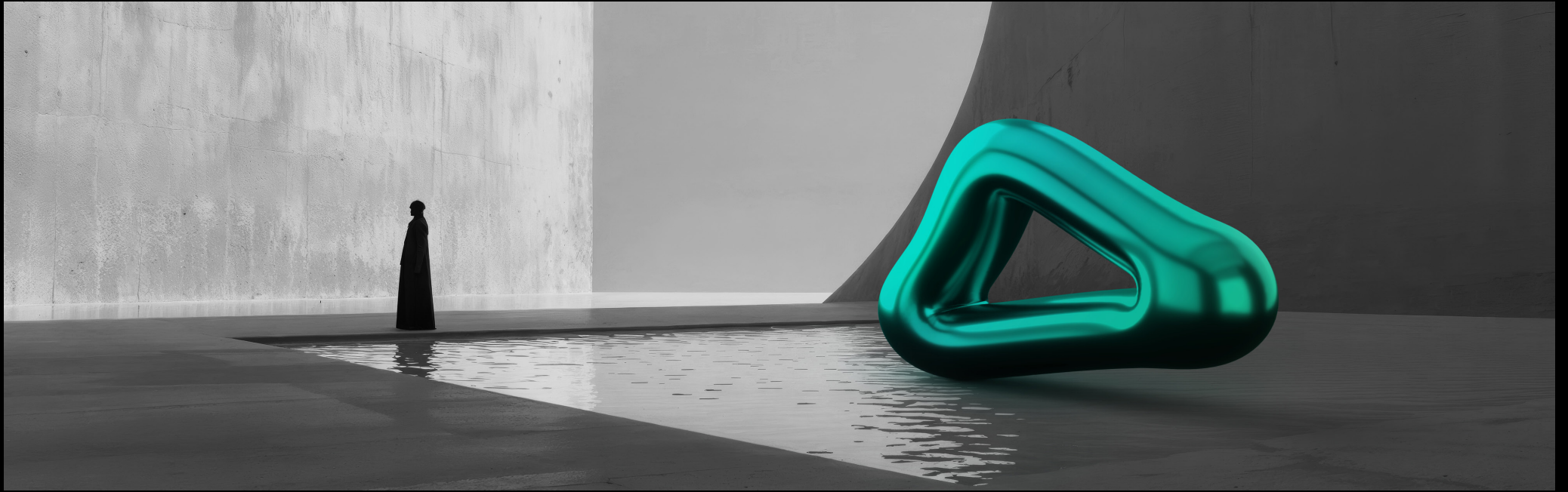
NEW TOWN GROUP (NTG) IS A DIVERSIFIED INVESTMENT POWERHOUSE ESTABLISHED IN 1992, WITH INTERESTS SPANNING REAL ESTATE, TRANSPORTATION, AGRICULTURE, TOURISM, AND MORE. SINCE ITS INCEPTION, NTG HAS POSITIONED ITSELF AS A KEY PLAYER IN EGYPT'S DEVELOPMENT LANDSCAPE, RECOGNIZED FOR PIONEERING PROJECTS THAT REFLECT LUXURY, INNOVATION, AND QUALITY.



THE GROUP'S PORTFOLIO INCLUDES RESIDENTIAL, COMMERCIAL, AND ADMINISTRATIVE PROJECTS, DEMONSTRATING ITS BROAD REACH AND COMMITMENT TO ENHANCING THE COMMUNITIES IT SERVES.

OUR  
PROJECT

02



*the* **NODE**

# A BEACON OF CONNECTIVITY

The Node is not just a destination

it's a vision brought to life by NTG Developments.

Strategically located in the vibrant heart of New Cairo, redefining commercial and administrative excellence. Positioned on a prominent roundabout, a landmark visible from all vantage points, seamlessly linking New Cairo to a wide array of key locations; from the New Administrative Capital, Maadi, and more.

This innovative hub symbolizes connectivity, growth, and opportunity, offering a perfect blend of modern design and functional spaces tailored for ambitious professionals and thriving businesses.

---

# DESIGNED TO INSPIRE & CONNECT

Every element of The Node is meticulously crafted to elevate the experience of its visitors and tenants. Beyond being a space, The Node is a journey—a place where architecture, functionality, and emotion converge.



**SEAMLESS  
NAVIGATION**

**DYNAMIC  
LIGHT PLAY**

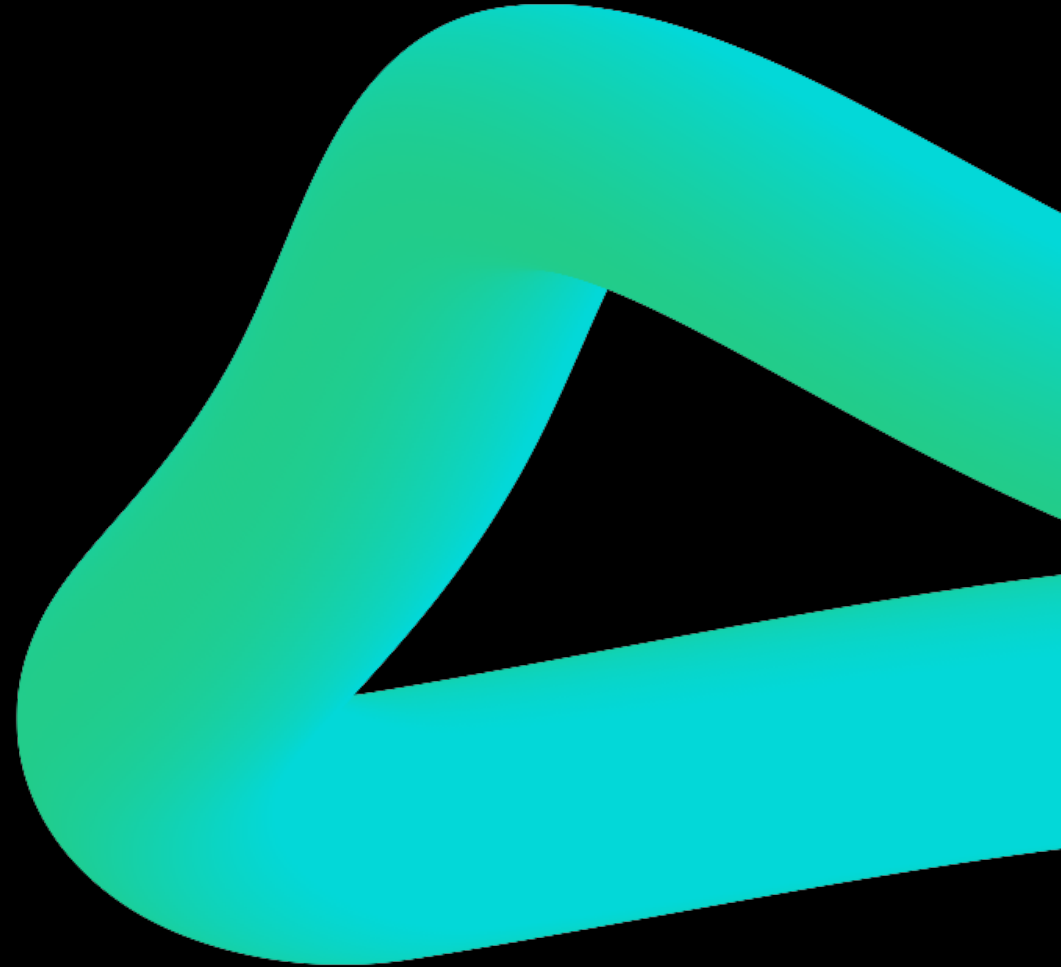
**IMMERSIVE  
LANDSCAPE**

**INTERACTIVE  
DESIGN**

**LOCATION &  
CONNECTIVITY**

**03**

THE NODE'S PRIME LOCATION PLACES IT AT THE CENTER  
OF NEW CAIRO'S DYNAMIC ROUNDABOUT, ENSURING  
UNPARALLELED VISIBILITY AND ACCESSIBILITY.



A stylized map of a city intersection. The map is rendered in a dark, muted green color against a black background. Several roads are highlighted with a bright red glow. The central intersection is marked with a red circle. The text 'the NODE' is prominently displayed in the center, with 'the' in a lowercase script font and 'NODE' in a bold, uppercase sans-serif font. Other labels include 'RING ROAD', 'AIN SOKHINA ROAD', 'DISTRICT 5', and 'MOHAMED NAGUIB'. An arrow points towards the right, labeled 'NEW CAIPTAL'.

*the* **NODE**

RING ROAD

MOHAMED NAGUIB

AIN SOKHINA ROAD

DISTRICT 5

NEW CAIPTAL



## **DIRECTLY LOCATED ON MOHAMED NAGUIB AXIS.**

**1 MIN** - MIDDLE RING ROAD

**1 MIN** - SOKHNA ROAD

**3 MIN** - GUC

**3 MIN** - GAMAL ABDEL NASSER AXIS

**5 MIN** - GOLDEN SQUARE.

**5 MIN** - SOUTH & NORTH 90 ROADS

**10 MIN** - MAADI

**10 MIN** - AUC

**10 MIN** - SUEZ ROAD





The Node stands as a testament to forward-thinking architecture. Its modern, deconstructivist style highlights its bold presence in the urban landscape, with angular forms and carefully curated outdoor spaces that create a visually engaging and dynamic experience

# 04



**A BOLD NEW  
PARADIGM IN DESIGN**

A

BOLD

ARCHITECTURAL

STATEMENT






THE NODE STANDS AS A BEACON OF FORWARD-THINKING DESIGN, EMBODYING THE MODERN DECONSTRUCTIVIST STYLE WITH ANGULAR FORMS AND STRIKING GEOMETRIES. ITS BOLD PRESENCE IN THE URBAN LANDSCAPE REDEFINES WHAT IT MEANS TO MERGE ART WITH ARCHITECTURE.

A JOURNEY OF DESIGN AND EMOTION





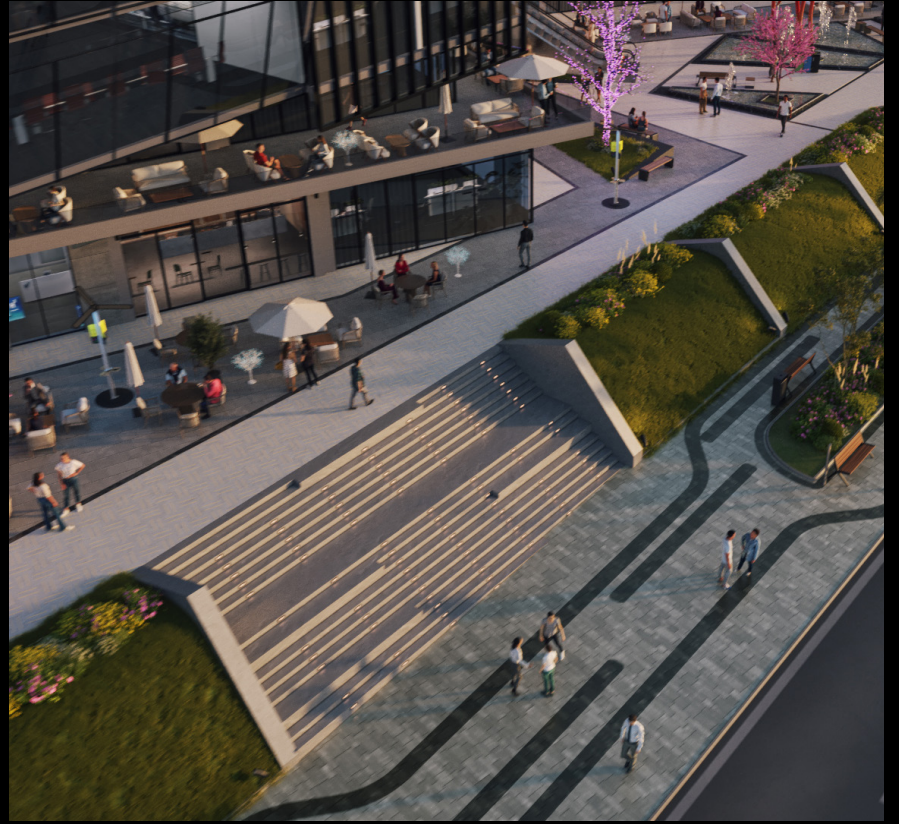
MORE THAN A BUILDING, THE NODE IS A JOURNEY. EVERY ELEMENT HAS BEEN METICULOUSLY CRAFTED TO CREATE A SPACE WHERE ARCHITECTURE, FUNCTIONALITY, AND EMOTION CONVERGE, OFFERING VISITORS AND TENANTS AN EXPERIENCE THAT INSPIRES AND UPLIFTS.

VERDI

SANTIAGO



**DYNAMIC SPACES, IMMERSIVE EXPERIENCES**



The Node captivates with its dynamic forms and carefully curated outdoor spaces. These areas are not just functional but emotional, providing moments of connection and reflection amid a visually engaging environment.

UNIT  
TYPES

05



# COMMERCIAL UNITS

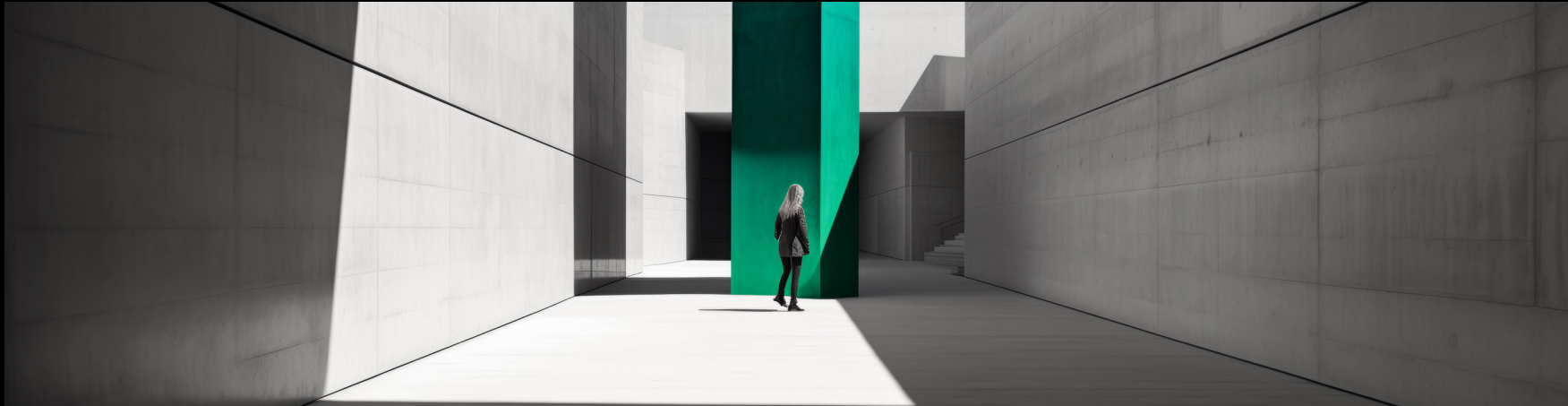
THE NODE'S COMMERCIAL SPACES ARE METICULOUSLY DESIGNED TO CATER TO HIGH-VISIBILITY BUSINESSES. WHETHER FOR RETAIL OUTLETS, FLAGSHIP STORES, OR F&B VENTURES, THESE UNITS OFFER:

## PRIME LOCATIONS:

Strategically placed for maximum exposure to foot traffic.

## FLEXIBLE CONFIGURATIONS:

Tailored to meet the needs of diverse brands and concepts.





# OFFICE SPACES

MODERN PROFESSIONALS NEED SPACES THAT INSPIRE CREATIVITY AND COLLABORATION. THE NODE'S OFFICES PROVIDE:

## STATE-OF-THE-ART FACILITIES:

Equipped to meet the demands of modern businesses.

## FUNCTIONAL AND STYLISH DESIGN:

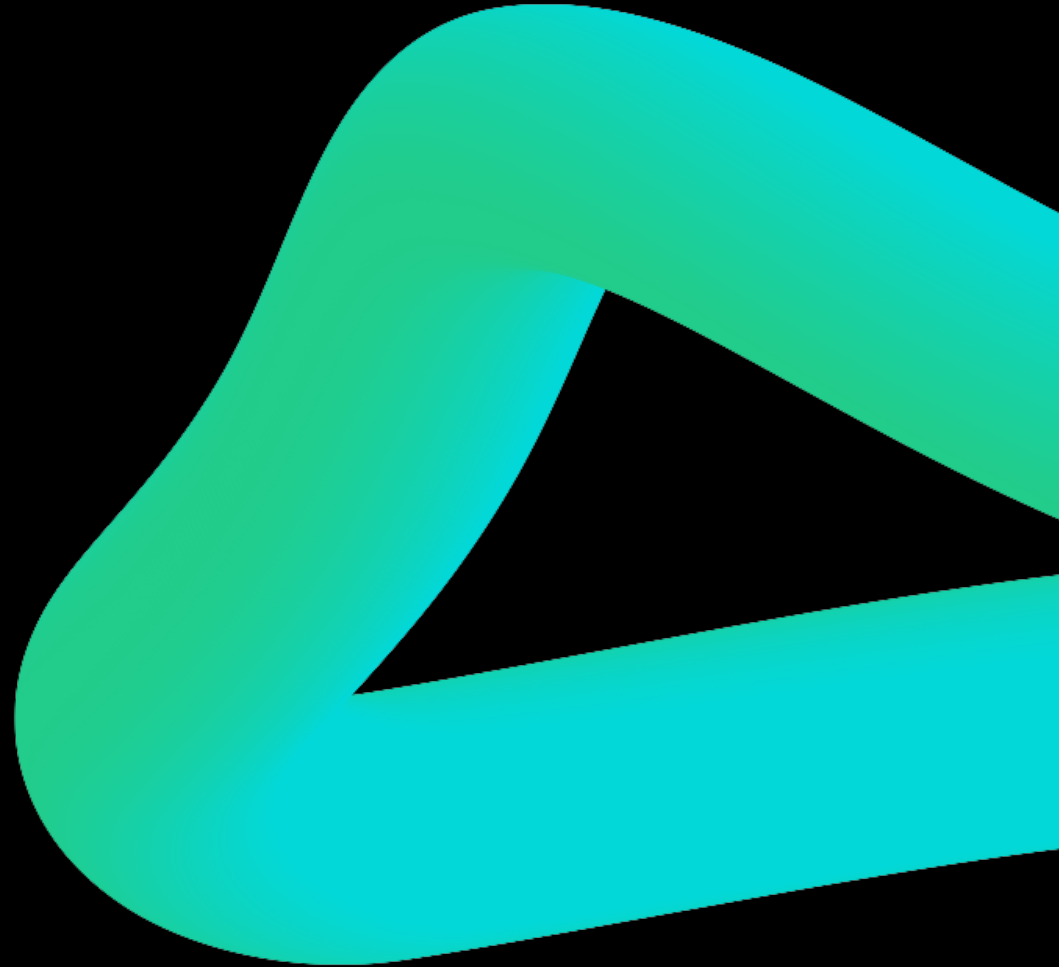
Balancing aesthetics with practicality for a premium workspace.

**METICULOUSLY  
DESIGNED FOR  
SEAMLESS  
FUNCTIONALITY**

**06**

THE NODE COMBINES FORM AND FUNCTION, DELIVERING  
AN EXPERIENCE THAT'S AS PRACTICAL AS IT IS INSPIRING:  
AT THE NODE, EVERY DETAIL IS DESIGNED TO ELEVATE DAILY  
LIFE AND BUSINESS SUCCESS

The Node isn't just a project—it's a movement toward  
the future, blending design, innovation, and opportunity  
in a single, transformative destination.





- RETAIL HUB



- CREATIVE HUB



- DINING AREA



- 3 ESCALATORS



- KIDS AREA



- 4 ELEVATORS



- ACCESSIBILITY FRIENDLY



- 2 BASEMENT GARAGES

 - 3 MAIN GATES

 - ELECTRIC CAR CHARGING STATIONS

 - 2 ADMINISTRATIVE ENTRANCES

 - KIDS AREA AND CREATIVE HUB

 - 150M WALKWAY

 - 2 PLAZAS

**OUR  
PARTNERS**

**07**



Founded in 2011 to research into, think on, and produce architecture and create a critical design environment.



ACE Project management – Moharram Bakhom  
Engineering Consultant ACE is one of the oldest, largest and most experienced multidisciplinary engineering consultancy companies currently operating worldwide.

*the* **NODE**

**NTG**  
NEW TOWN GROUP

**15893**

[ntg-development.com](http://ntg-development.com)